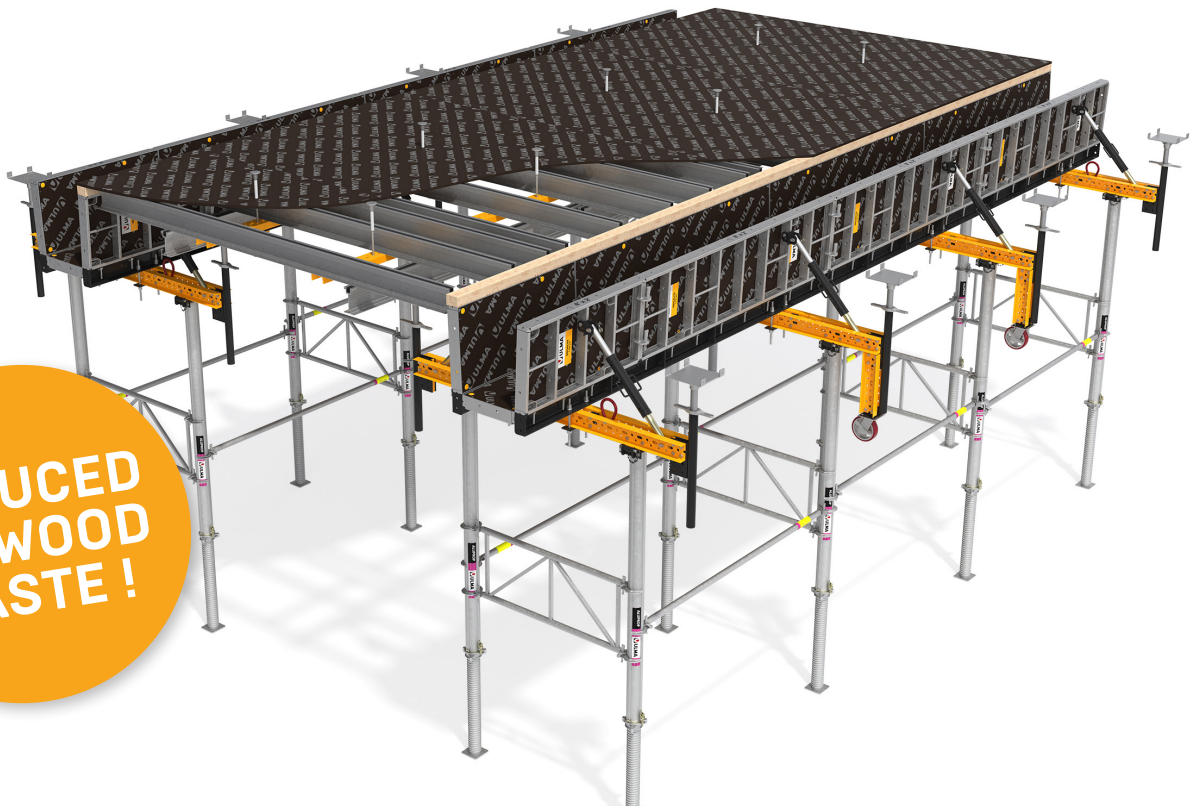


**ACT NOW !**



# **GARAGE BEAM SYSTEM**

Take advantage of our new **versatile & cost-effective** parking garage shoring system!



**REDUCED  
PLYWOOD  
WASTE !**

Used equipment **Up to 65% OFF**

**Up to 45% OFF** New equipment

**Call or text us today** for more details  
at **770-910-7510** or email us to  
**[sales@ulmaconstruction.us](mailto:sales@ulmaconstruction.us)**

# **BIG DISCOUNTS**

**ON PURCHASE OF NEW  
OR USED EQUIPMENT**

## MAIN FEATURES

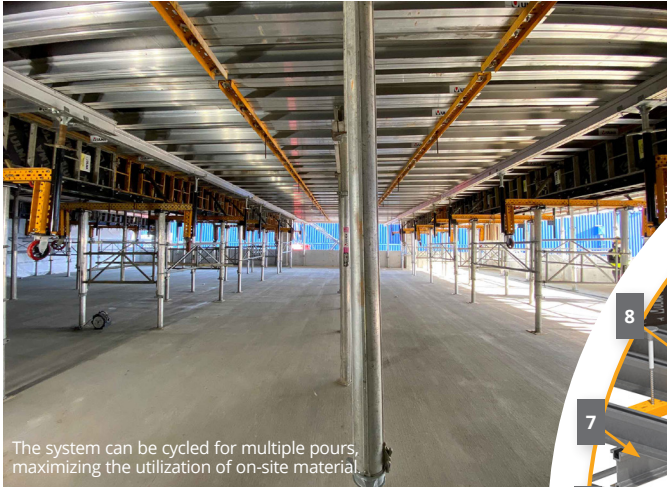
### • High level of productivity:

- Easy and intuitive assembly using standard shoring and forming components with a simple clamp and/or bolt & nut connections.
- Concrete beams up to 32ft. long are easily moved as a unit with integrated wheels.

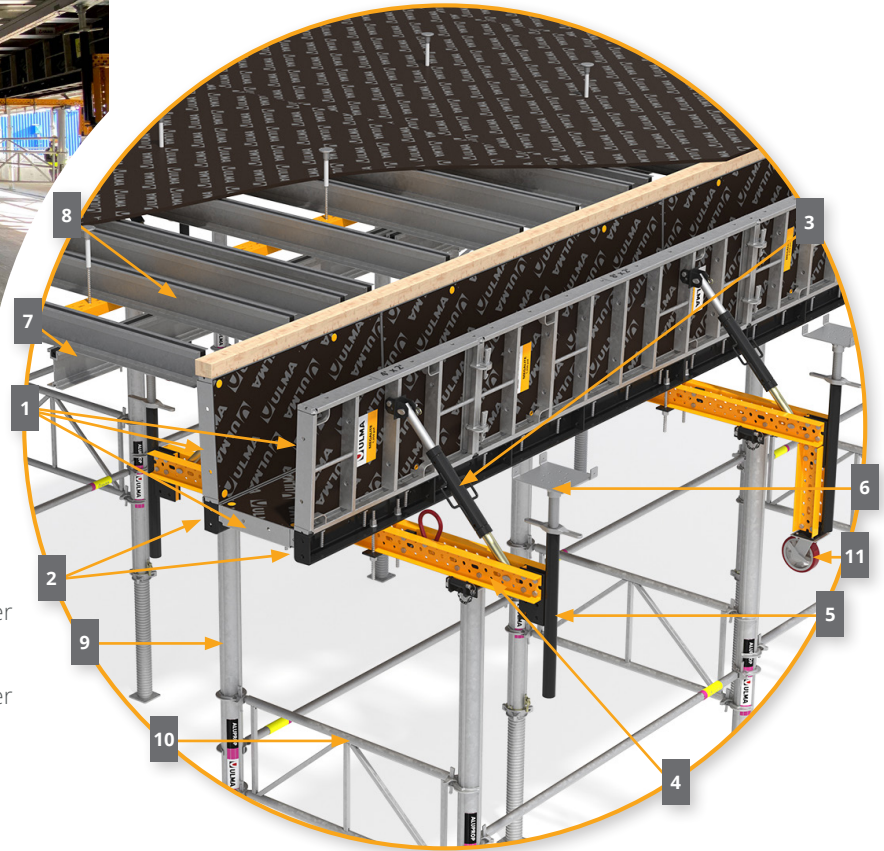
### • Cost-effective solution by using standard Modular panels reducing labor cost and plywood waste.

### • Modular & Versatile:

- Beam forming with standard MEGALITE modular panels.
- Wide range of shoring height applications and high load bearing capacity with ALUPROP posts. MEGAFRAME shoring towers available.
- The system can be cycled for multiple pours, maximizing the utilization of on-site material.
- Excellent concrete finish.
- Compatible with ULMA safety accessories such as handrails and post brackets for added safety.



The system can be cycled for multiple pours, maximizing the utilization of on-site material.



- |                      |                              |
|----------------------|------------------------------|
| 1 MEGALITE Panel     | 8 Aluminum joist             |
| 2 GB Panel corner    | 9 ALUPROP & Adapter head     |
| 3 Push-pull prop     | 10 Bracing frame             |
| 4 Waler MK-120       | 11 GB Wheel adapter w/Caster |
| 5 Screw jack adapter | 10 Bracing frame             |
| 6 Screw jack & head  | 11 GB Wheel adapter w/Caster |
| 7 Aluminum stringer  |                              |

Various **payment methods available** to meet your financial needs.



**Engineering support** for future projects. Efficient and tailor-made technical solutions.



**Training and Field Service** for correct and safe product use and assembly.

